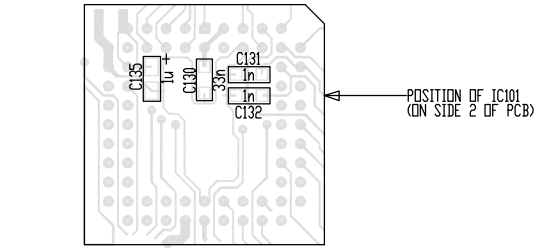
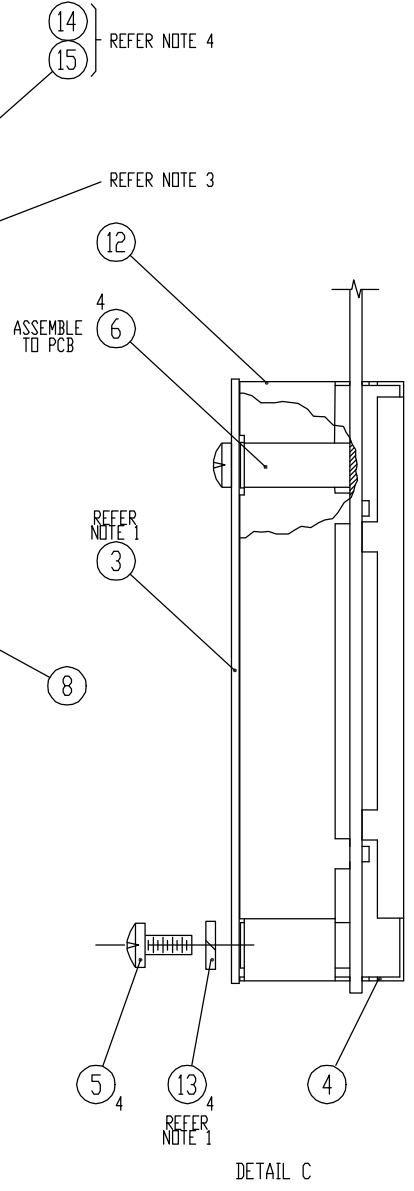
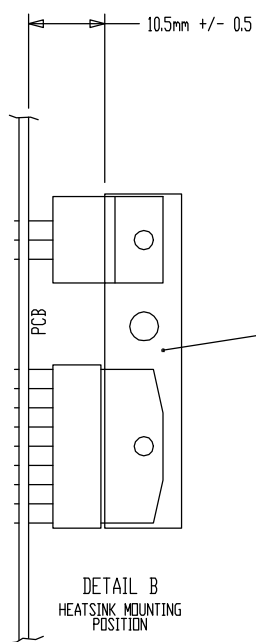
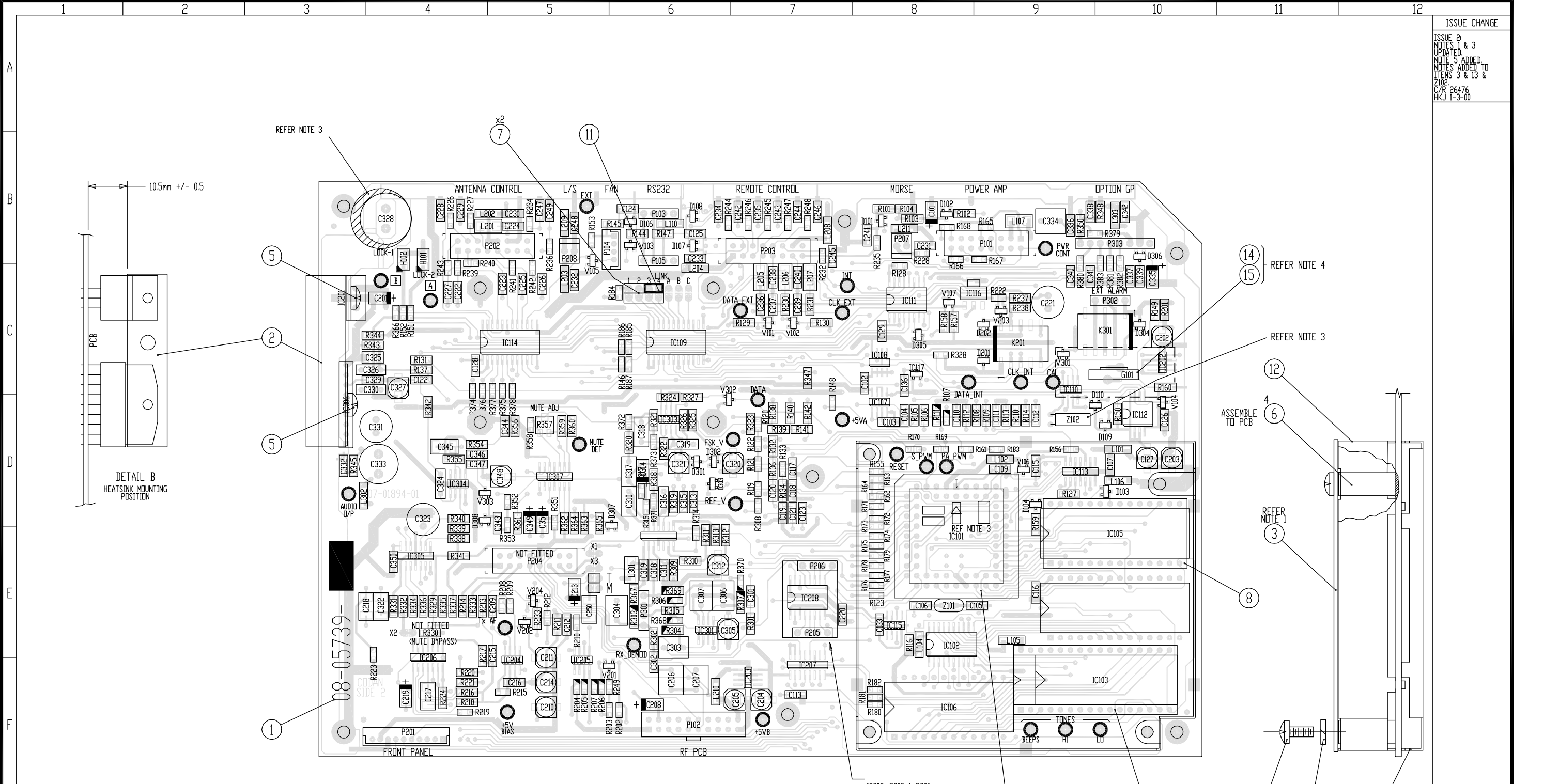


ISSUE CHANGE  
 ISSUE 2  
 NOTES 1 & 3  
 UPDATED  
 NOTE 5 ADDED  
 NOTES ADDED TO  
 ITEMS 3 & 13 &  
 Z102  
 C/R 26476  
 HKJ 1-3-00



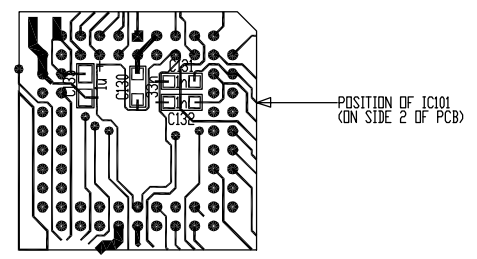
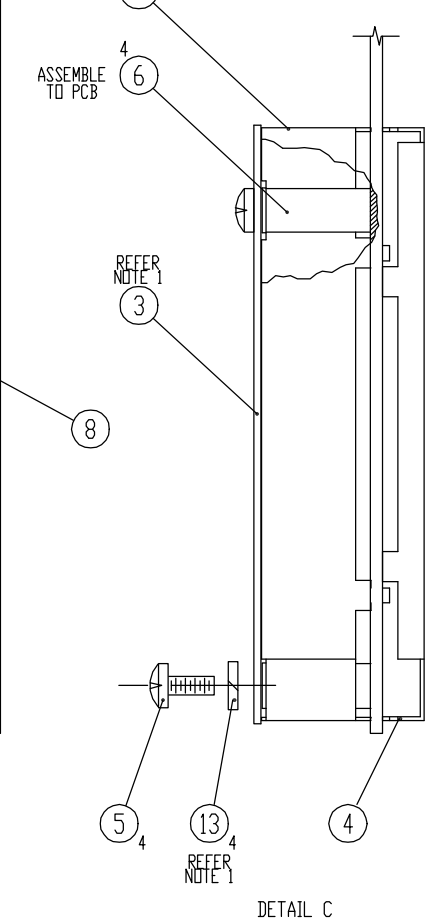
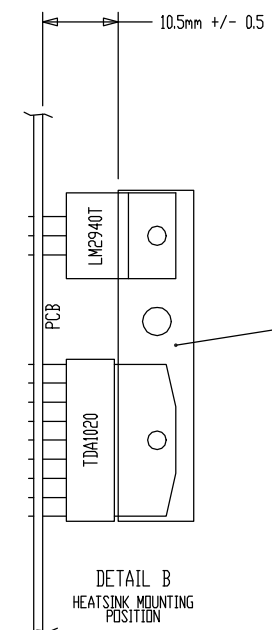
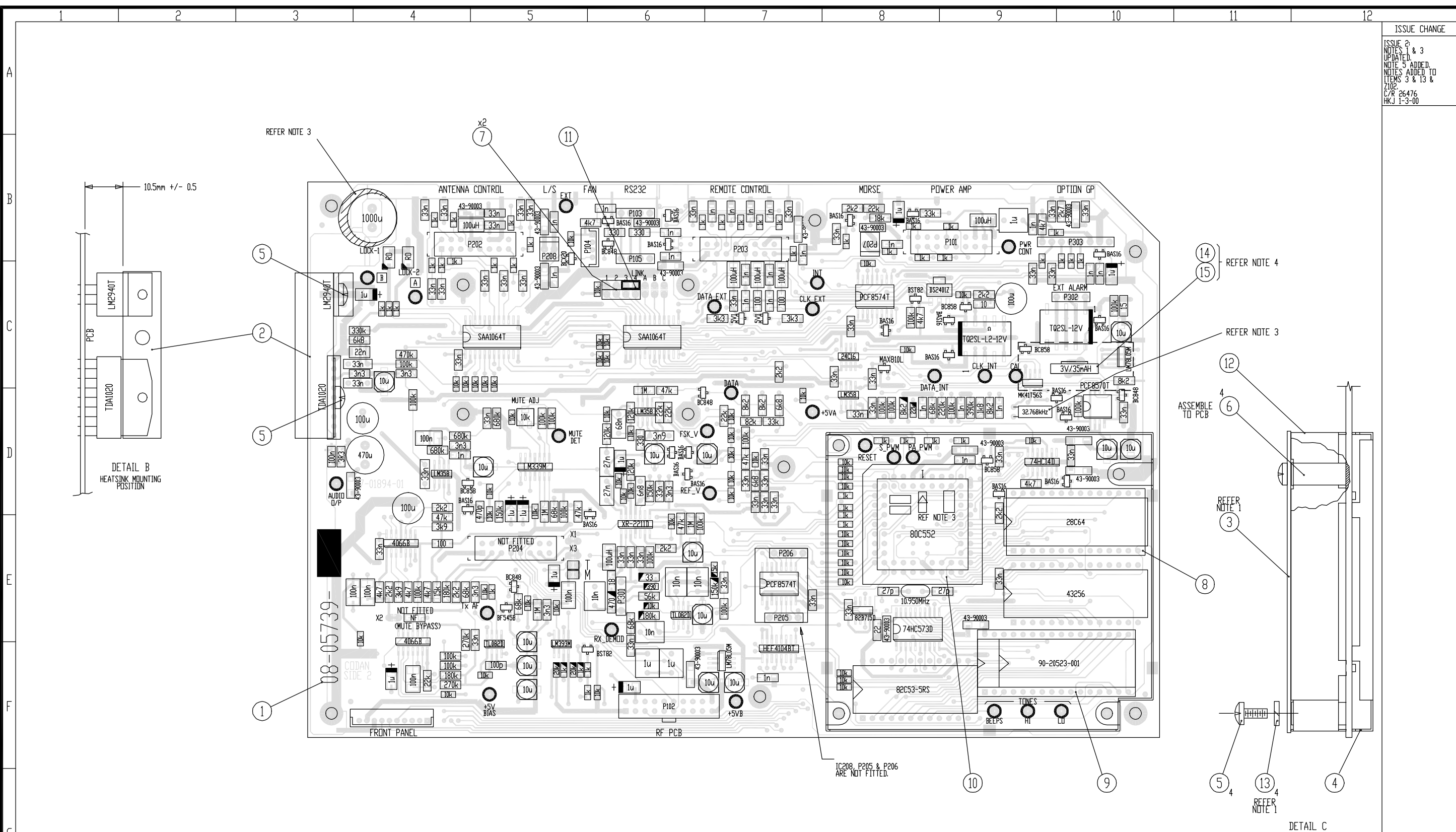
- NOTES:
- SOLDER BOTTOM SHIELD (ITEM 4) IN PLACE, FIT TOP SCREEN (ITEM 3) AND WASHER (ITEM 13) AFTER TEST. REFER DETAIL A.
  - C130, C131, C132 & C135 TO BE SURFACE MOUNTED TO SIDE 1 AT POST WAVE SOLDER.
  - CAPACITOR C328 (TOP L/H CORNER) AND CRYSTAL Z102 (MID R/H SIDE) TO BE SECURED WITH RTV SILICON AFTER SOLDERING.
  - FIT A 15mm x 6mm RUBBER SLEEVE (ITEM 15) OVER BATTERY G101. PLACE A STRIP OF 12mm RUBBER FOAM TAPE (ITEM 14), OVER BATTERY LEGS ON SIDE 1 OF PCB.
  - SOLDER SHIELD (ITEM 12) SEAM AFTER WAVE SOLDER.

PCB :07-01894-01  
 ASSY:08-05739-001

FILE NAME  
 07\01894\_1

CODAN	DRN	C G	SCALE	2:1	CODAN PTY LTD, ACN. 007 590 605, 1999
	CHKD	NJA	DATE	10-5-99	
FINISH	APPD	SCS	12-1-00	DATE	6-7-99
	TOLERANCES UNLESS OTHERWISE STATED				DRAWING/DWG No.
2 PLACES DEC ±				ISS	SHT 1 OF 2
1 PLACE DEC ±					
ANGULAR ±				2	

ISSUE CHANGE  
 ISSUE 2  
 NOTES 1 & 3  
 UPDATED.  
 NOTE 5 ADDED.  
 NOTES ADDED TO  
 ITEMS 3 & 13 &  
 Z102  
 C/R 26476  
 HKJ 1-3-00



- NOTES:
1. SOLDER BOTTOM SHIELD (ITEM 4) IN PLACE, FIT TOP SCREEN (ITEM 3) AND WASHER (ITEM 13) AFTER TEST.
  2. C130, C131, C132 & C135 TO BE SURFACE MOUNTED TO SIDE 1 AT POST WAVE SOLDER REFER DETAIL A.
  3. CAPACITOR C328 (TOP L/H CORNER) AND CRYSTAL Z102 (MID R/H SIDE) TO BE SECURED WITH RTV SILICON AFTER SOLDERING.
  4. FIT A 15mm x 6mm RUBBER SLEEVE (ITEM 15) OVER BATTERY G101. PLACE A STRIP OF 12mm RUBBER FOAM TAPE (ITEM 14), OVER BATTERY LEGS ON SIDE 1 OF PCB.
  5. SOLDER SHIELD (ITEM 12) SEAM AFTER WAVE SOLDER.

PCB :07-01894-01  
 ASSY:08-05739-001

FILE NAME  
 07101894\_1

CODAN	DRN.	C G	SCALE	2:1	CODAN PTY. LTD. ACN 007 590 605, 1999
	CHKD.	NJA	DATE	10-5-99	
FINISH	APPD.	SCS	12-1-00	MATERIAL	MICROPROCESSOR & AUDIO ASSEMBLY
TOLERANCES UNLESS OTHERWISE STATED				DRAWING/DOC. No.	08-05739
2 PLACES DEC ±				ISS	2
1 PLACE DEC ±				SH	2
ANGULAR ±				OF	2